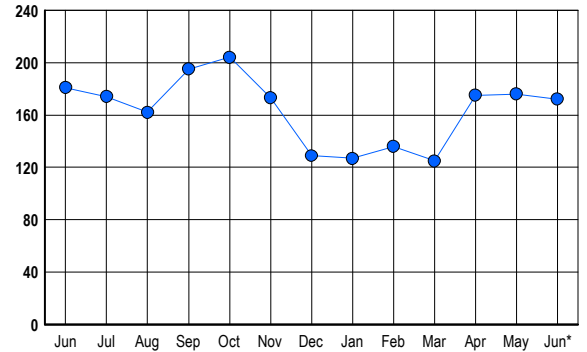


LISTINGS

Prices Range	New This Month			Total Actives		
	2005	2004	% Change	2005	2004	% Change
0 - 149,999	0	4	-100.0	2	2	0.0
150,000 - 199,999	0	1	-100.0	0	2	-100.0
200,000 - 299,999	0	10	-100.0	1	11	-90.9
300,000 - 399,999	8	25	-68.0	3	16	-81.3
400,000 - 499,999	28	55	-49.1	11	18	-38.9
500,000 - 599,999	34	60	-43.3	15	24	-37.5
600,000 - 699,999	58	54	7.4	32	24	33.3
700,000 - 799,999	35	45	-22.2	26	23	13.0
800,000 - 899,999	19	13	46.2	10	9	11.1
900,000 - 999,999	20	11	81.8	12	16	-25.0
1,000,000 - 1,249,999	15	11	36.4	15	13	15.4
1,250,000 - 1,499,999	13	1	1,200.0	20	11	81.8
1,500,000 +	10	4	150.0	25	12	108.3
TOTALS	240	294	-18.4	172	181	-5.0

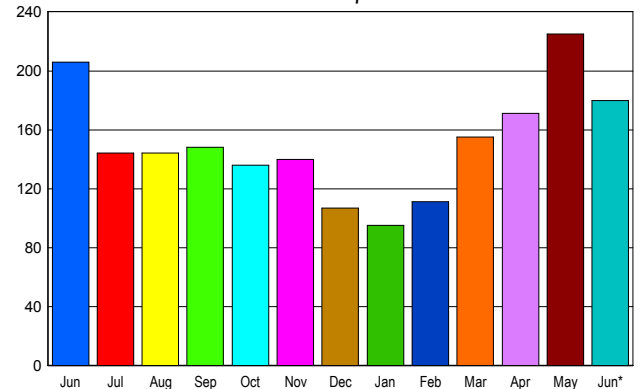
INVENTORY TREND

Listings Active at End of Month



SALES TREND

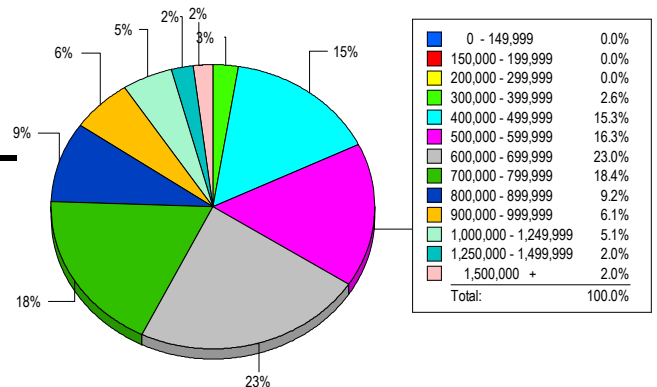
Contracts Ratified Per Month



CONTRACTS

Price Range	New This Month			Year-To-Date		
	2005	2004	% Change	2005	2004	% Change
0 - 149,999	0	0	0.0	0	4	-100.0
150,000 - 199,999	0	1	-100.0	0	2	-100.0
200,000 - 299,999	0	10	-100.0	5	53	-90.6
300,000 - 399,999	11	22	-50.0	51	129	-60.5
400,000 - 499,999	25	46	-45.7	126	224	-43.8
500,000 - 599,999	30	49	-38.8	191	245	-22.0
600,000 - 699,999	51	30	70.0	206	130	58.5
700,000 - 799,999	22	26	-15.4	121	103	17.5
800,000 - 899,999	18	9	100.0	71	42	69.0
900,000 - 999,999	11	8	37.5	54	30	80.0
1,000,000 - 1,249,999	3	2	50.0	38	27	40.7
1,250,000 - 1,499,999	4	2	100.0	34	17	100.0
1,500,000 +	5	1	400.0	27	13	107.7
TOTALS	180	206	-12.6	924	1019	-9.3

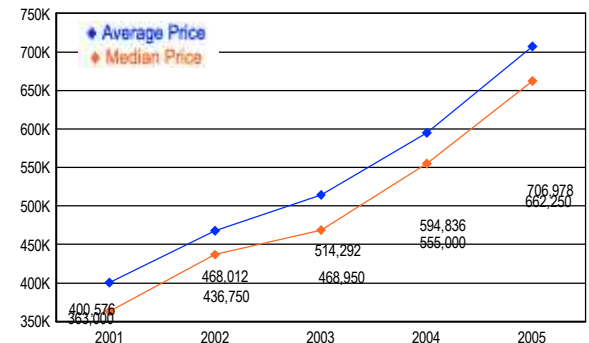
MARKET BY PRICE RANGE



SETTLEMENTS

Price Range	New This Month			Year-to-Date		
	2005	2004	% Change	2005	2004	% Change
0 - 149,999	0	0	0.0	0	4	-100.0
150,000 - 199,999	0	0	0.0	0	0	0.0
200,000 - 299,999	0	7	-100.0	1	50	-98.0
300,000 - 399,999	5	23	-78.3	29	108	-73.1
400,000 - 499,999	30	44	-31.8	103	171	-39.8
500,000 - 599,999	32	67	-52.2	165	226	-27.0
600,000 - 699,999	45	40	12.5	176	123	43.1
700,000 - 799,999	36	31	16.1	117	84	39.3
800,000 - 899,999	18	18	0.0	73	46	58.7
900,000 - 999,999	12	4	200.0	51	31	64.5
1,000,000 - 1,249,999	10	6	66.7	47	23	104.3
1,250,000 - 1,499,999	4	2	100.0	29	12	141.7
1,500,000 +	4	0	400.0	23	7	228.6
TOTALS	196	242	-19.0	814	885	-8.0

AVERAGE & MEDIAN PRICE



DATA SOURCE: Metropolitan Regional Information Systems, Inc. (MRIS)

NOTES: Properties not listed through this Multiple Listing Service are not reflected. The term "sales" represents ratified purchase contracts. Current year information is preliminary and subject to revision. Current year-to-date contract information may not equal the sum of the monthly contract totals reported in