

# PRINCE WILLIAM COUNTY HOUSING REPORT

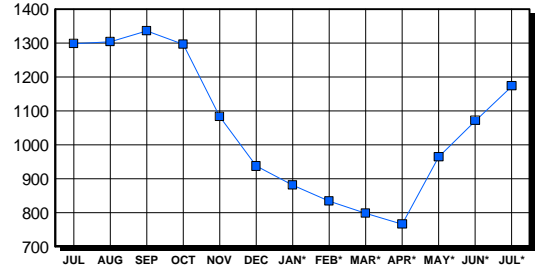
## Residential Market Report Single Family Homes July 2004

### LISTINGS

Price Range	New This Month			Total Active		
	2004	2003	% Change	2004	2003	% Change
0-149999	7	35	-80.0	73	83	-12.0
150000-299999	503	656	-23.3	279	504	-44.6
300000-449999	434	275	57.8	342	457	-25.2
450000-599999	221	80	176.3	287	168	70.8
600000-749999	57	18	216.7	110	40	175.0
750000-999999	25	8	212.5	62	32	93.8
1000000 & Over	9	2	350.0	21	13	61.5
<b>Grand Total:</b>	<b>1,256</b>	<b>1,074</b>	<b>16.9</b>	<b>1,174</b>	<b>1,297</b>	<b>-9.5</b>

### INVENTORY TREND

Listings Active At End Of Month

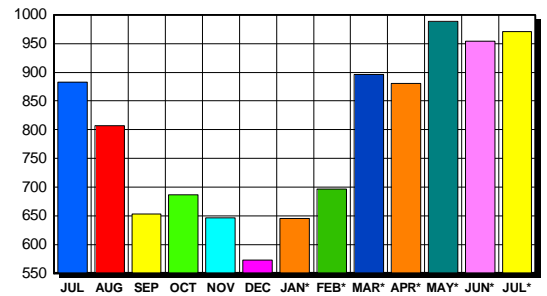


### CONTRACTS

Price Range	New This Month			Year-To-Date		
	2004	2003	% Change	2004	2003	% Change
0-149999	0	46	-4,600.0	28	476	-94.1
150000-299999	465	583	-20.2	3,169	3,348	-5.3
300000-449999	328	186	76.3	1,899	1,122	69.3
450000-599999	139	49	183.7	703	219	221.0
600000-749999	27	13	107.7	153	33	363.6
750000-999999	11	3	266.7	67	13	415.4
1000000 & Over	1	1	0.0	14	5	180.0
<b>Grand Total:</b>	<b>971</b>	<b>881</b>	<b>10.2</b>	<b>6,033</b>	<b>5,216</b>	<b>15.7</b>

### SALES TREND

Contracts Ratified Per Month



### SETTLEMENTS

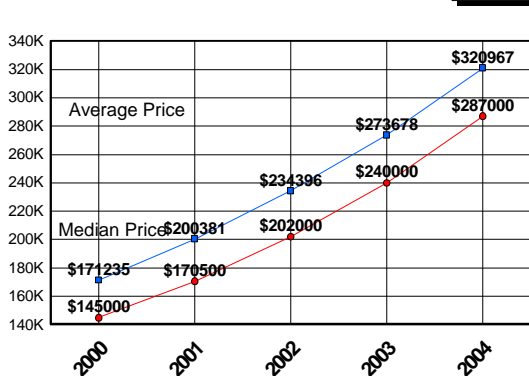
Price Range	New This Month			Year-To-Date		
	2004	2003	% Change	2004	2003	% Change
0-149999	1	35	-97.1	34	448	-92.4
150000-299999	414	563	-26.5	2,915	2,944	-1.0
300000-449999	325	204	59.3	1,737	970	79.1
450000-599999	116	41	182.9	557	175	218.3
600000-749999	23	3	666.7	124	24	416.7
750000-999999	9	4	125.0	40	12	233.3
1000000 & Over	0	1	-100.0	9	5	80.0
<b>Grand Total:</b>	<b>888</b>	<b>851</b>	<b>4.3</b>	<b>5,416</b>	<b>4,578</b>	<b>18.3</b>

### DATA SOURCE

Metropolitan Regional Information System (MRIS)

NOTES: Properties not listed through this Multiple Listing Service are not reflected. The term "sales" represents ratified purchase contracts. Current year information is preliminary and subject to revision. Current year-to-date contract information may not equal the sum of the monthly contract totals reported in previous issues. Prices are not adjusted for inflation.

### AVERAGE & MEDIAN PRICE



### MARKET BY PRICE RANGE

