

# ALEXANDRIA CITY HOUSING REPORT

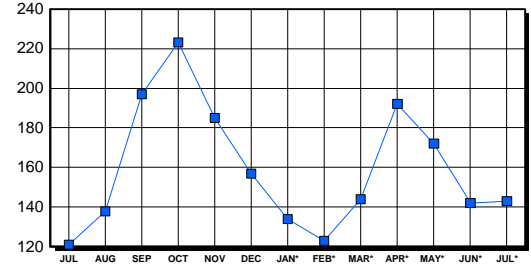
## Residential Market Report Single Family Homes July 2003

### LISTINGS

Price Range	New This Month			Total Active		
	2003	2002	% Change	2003	2002	% Change
0-149999	1	1	0.0	6	5	20.0
150000-299999	33	31	6.5	28	28	0.0
300000-449999	58	55	5.5	34	28	21.4
450000-599999	42	20	110.0	31	19	63.2
600000-749999	14	17	-17.6	16	17	-5.9
750000-999999	6	12	-50.0	15	18	-16.7
1000000 & Over	4	4	0.0	13	6	116.7
<b>Grand Total:</b>	<b>158</b>	<b>140</b>	<b>12.9</b>	<b>143</b>	<b>121</b>	<b>18.2</b>

### INVENTORY TREND

Listings Active At End Of Month

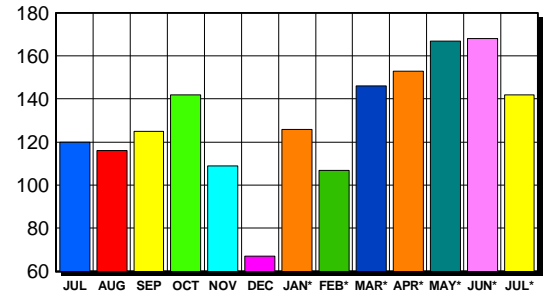


### CONTRACTS

Price Range	New This Month			Year-To-Date		
	2003	2002	% Change	2003	2002	% Change
0-149999	0	0	0.0	3	16	-81.3
150000-299999	28	31	-9.7	175	254	-31.1
300000-449999	60	48	25.0	439	334	31.4
450000-599999	38	24	58.3	217	145	49.7
600000-749999	7	5	40.0	94	48	95.8
750000-999999	6	8	-25.0	49	51	-3.9
1000000 & Over	3	3	0.0	32	25	28.0
<b>Grand Total:</b>	<b>142</b>	<b>119</b>	<b>19.3</b>	<b>1,009</b>	<b>873</b>	<b>15.6</b>

### SALES TREND

Contracts Ratified Per Month



### SETTLEMENTS

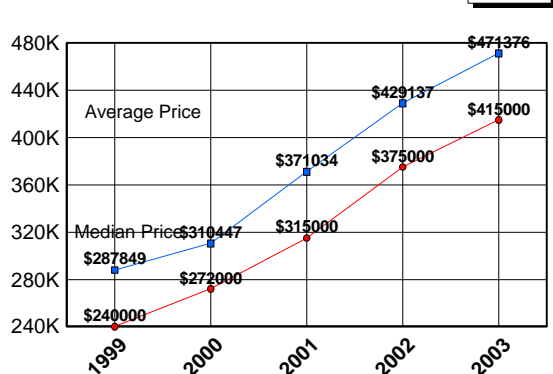
Price Range	New This Month			Year-To-Date		
	2003	2002	% Change	2003	2002	% Change
0-149999	0	3	-300.0	2	20	-90.0
150000-299999	15	41	-63.4	155	245	-36.7
300000-449999	83	59	40.7	400	325	23.1
450000-599999	41	28	46.4	196	130	50.8
600000-749999	16	6	166.7	81	48	68.8
750000-999999	9	10	-10.0	49	35	40.0
1000000 & Over	4	3	33.3	30	22	36.4
<b>Grand Total:</b>	<b>168</b>	<b>150</b>	<b>12.0</b>	<b>913</b>	<b>825</b>	<b>10.7</b>

### DATA SOURCE

Metropolitan Regional Information System (MRIS)

NOTES: Properties not listed through this Multiple Listing Service are not reflected. The term "sales" represents ratified purchase contracts. Current year information is preliminary and subject to revision. Current year- to- date contract information may not equal the sum of the monthly contract totals reported in previous issues. Prices are not adjusted for inflation.

### AVERAGE & MEDIAN PRICE



### MARKET BY PRICE RANGE

