

# ALEXANDRIA CITY HOUSING REPORT

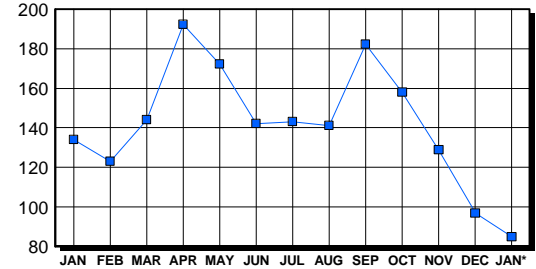
## Residential Market Report Single Family Homes January 2004

### LISTINGS

Price Range	New This Month			Total Active		
	2004	2003	% Change	2004	2003	% Change
0-149999	0	0	0.0	5	5	100.0
150000-299999	13	29	-55.2	17	30	-43.3
300000-449999	31	62	-50.0	18	38	-52.6
450000-599999	24	24	0.0	12	16	-25.0
600000-749999	13	9	44.4	8	17	-52.9
750000-999999	10	7	42.9	9	15	-40.0
1000000 & Over	4	3	33.3	16	13	23.1
<b>Grand Total:</b>	<b>95</b>	<b>134</b>	<b>-29.1</b>	<b>85</b>	<b>134</b>	<b>-36.6</b>

### INVENTORY TREND

Listings Active At End Of Month

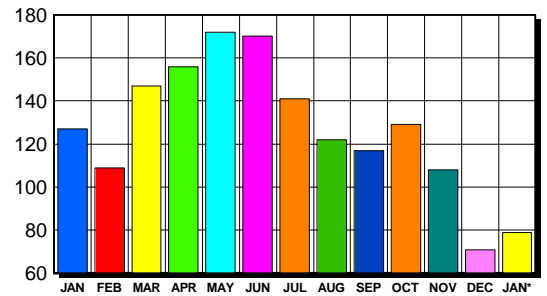


### CONTRACTS

Price Range	New This Month			Year-To-Date		
	2004	2003	% Change	2004	2003	% Change
0-149999	1	0	100.0	1	0	100.0
150000-299999	11	31	-64.5	11	31	-64.5
300000-449999	23	53	-56.6	23	53	-56.6
450000-599999	20	20	0.0	20	20	0.0
600000-749999	12	10	20.0	12	10	20.0
750000-999999	8	5	60.0	8	5	60.0
1000000 & Over	4	6	-33.3	4	6	-33.3
<b>Grand Total:</b>	<b>79</b>	<b>125</b>	<b>-36.8</b>	<b>79</b>	<b>125</b>	<b>-36.8</b>

### SALES TREND

Contracts Ratified Per Month



### SETTLEMENTS

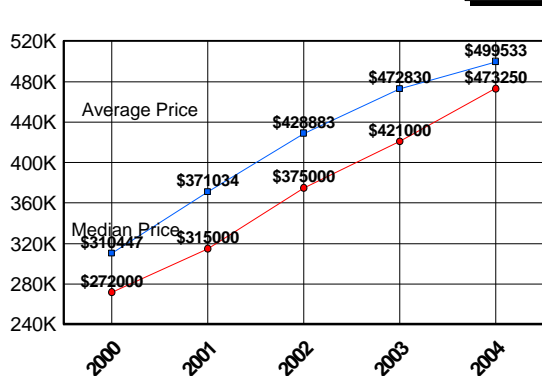
Price Range	New This Month			Year-To-Date		
	2004	2003	% Change	2004	2003	% Change
0-149999	0	0	0.0	0	0	0.0
150000-299999	12	18	-33.3	12	18	-33.3
300000-449999	21	35	-40.0	21	35	-40.0
450000-599999	25	22	13.6	25	22	13.6
600000-749999	9	4	125.0	9	4	125.0
750000-999999	3	8	-62.5	3	8	-62.5
1000000 & Over	4	4	0.0	4	4	0.0
<b>Grand Total:</b>	<b>74</b>	<b>91</b>	<b>-18.7</b>	<b>74</b>	<b>91</b>	<b>-18.7</b>

### DATA SOURCE

Metropolitan Regional Information System (MRIS)

NOTES: Properties not listed through this Multiple Listing Service are not reflected. The term "sales" represents ratified purchase contracts. Current year information is preliminary and subject to revision. Current year- to- date contract information may not equal the sum of the monthly contract totals reported in previous issues. Prices are not adjusted for inflation.

### AVERAGE & MEDIAN PRICE



### MARKET BY PRICE RANGE

