

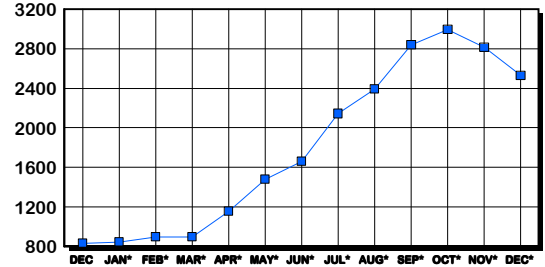
PRINCE WILLIAM COUNTY HOUSING REPORT

Residential Market Report Single Family Homes December 2005

LISTINGS

Price Range	New This Month			Total Active		
	2005	2004	% Change	2005	2004	% Change
0-149999	1	5	-80.0	83	74	12.2
150000-299999	56	168	-66.7	202	123	64.2
300000-449999	343	292	17.5	879	226	288.9
450000-599999	253	170	48.8	696	236	194.9
600000-749999	138	47	193.6	436	97	349.5
750000-999999	80	28	185.7	186	59	215.3
1000000 & Over	10	2	400.0	43	21	104.8
Grand Total:	881	712	23.7	2,525	836	202.0

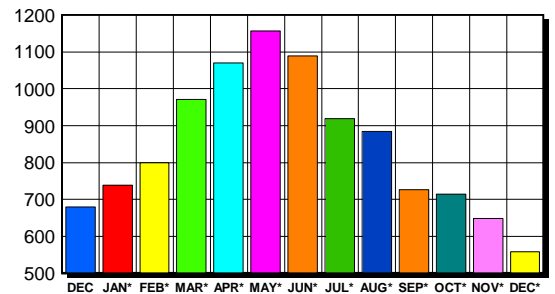
INVENTORY TREND Listings Active At End Of Month



CONTRACTS

Price Range	New This Month			Year-To-Date		
	2005	2004	% Change	2005	2004	% Change
0-149999	0	0	0.0	2	32	-93.8
150000-299999	46	219	-79.0	1,523	4,822	-68.4
300000-449999	278	302	-7.9	5,205	3,537	47.2
450000-599999	135	144	-6.3	2,261	1,384	63.4
600000-749999	74	31	138.7	950	311	205.5
750000-999999	21	15	40.0	265	121	119.0
1000000 & Over	4	3	33.3	68	18	277.8
Grand Total:	558	714	-21.8	10,274	10,225	0.5

SALES TREND Contracts Ratified Per Month



SETTLEMENTS

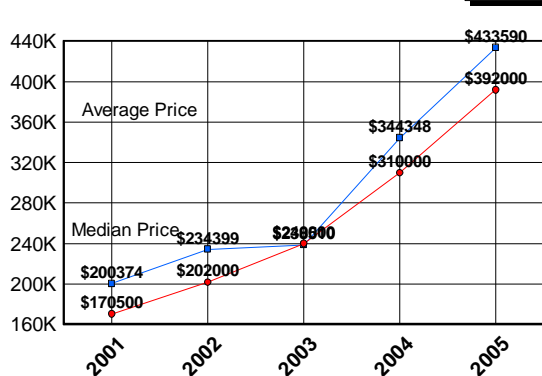
Price Range	New This Month			Year-To-Date		
	2005	2004	% Change	2005	2004	% Change
0-149999	0	0	0.0	5	36	-86.1
150000-299999	51	286	-82.2	1,400	4,916	-71.5
300000-449999	365	354	3.1	5,385	3,450	56.1
450000-599999	181	153	18.3	2,378	1,325	79.5
600000-749999	100	43	132.6	988	281	251.6
750000-999999	37	17	117.6	270	107	152.3
1000000 & Over	10	2	400.0	61	14	335.7
Grand Total:	744	855	-13.0	10,487	10,129	3.5

DATA SOURCE

Metropolitan Regional Information System (MRIS)

NOTES: Properties not listed through this Multiple Listing Service are not reflected. The term "sales" represents ratified purchase contracts. Current year information is preliminary and subject to revision. Current year-to-date contract information may not equal the sum of the monthly contract totals reported in previous issues. Prices are not adjusted for inflation.

AVERAGE & MEDIAN PRICE



MARKET BY PRICE RANGE

