

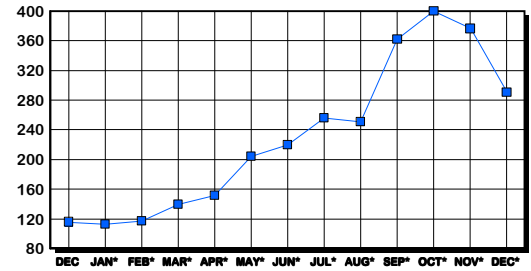
ALEXANDRIA CITY HOUSING REPORT

Residential Market Report Single Family Homes December 2005

LISTINGS

| Price Range | New This Month | | | Total Active | | |
|---------------------|----------------|-----------|--------------|--------------|------------|--------------|
| | 2005 | 2004 | % Change | 2005 | 2004 | % Change |
| 0-149999 | 1 | 1 | 0.0 | 9 | 9 | 0.0 |
| 150000-299999 | 1 | 7 | -85.7 | 14 | 16 | -12.5 |
| 300000-449999 | 14 | 24 | -41.7 | 42 | 17 | 147.1 |
| 450000-599999 | 21 | 32 | -34.4 | 69 | 14 | 392.9 |
| 600000-749999 | 18 | 12 | 50.0 | 66 | 17 | 288.2 |
| 750000-999999 | 18 | 12 | 50.0 | 52 | 11 | 372.7 |
| 1000000 & Over | 13 | 10 | 30.0 | 38 | 32 | 18.8 |
| Grand Total: | 86 | 98 | -12.2 | 290 | 116 | 150.0 |

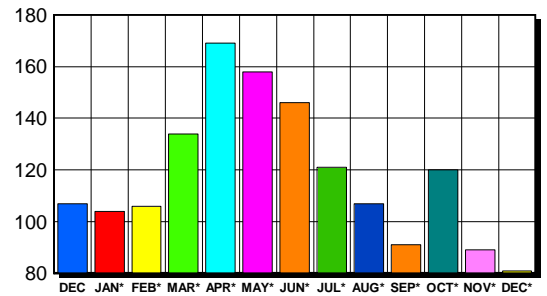
INVENTORY TREND Listings Active At End Of Month



CONTRACTS

| Price Range | New This Month | | | Year-To-Date | | |
|---------------------|----------------|------------|--------------|--------------|--------------|-------------|
| | 2005 | 2004 | % Change | 2005 | 2004 | % Change |
| 0-149999 | 0 | 0 | 0.0 | 1 | 2 | -50.0 |
| 150000-299999 | 1 | 6 | -83.3 | 28 | 105 | -73.3 |
| 300000-449999 | 18 | 25 | -28.0 | 246 | 433 | -43.2 |
| 450000-599999 | 23 | 40 | -42.5 | 476 | 564 | -15.6 |
| 600000-749999 | 19 | 17 | 11.8 | 339 | 262 | 29.4 |
| 750000-999999 | 14 | 10 | 40.0 | 222 | 139 | 59.7 |
| 1000000 & Over | 6 | 9 | -33.3 | 114 | 71 | 60.6 |
| Grand Total: | 81 | 107 | -24.3 | 1,426 | 1,576 | -9.5 |

SALES TREND Contracts Ratified Per Month



SETTLEMENTS

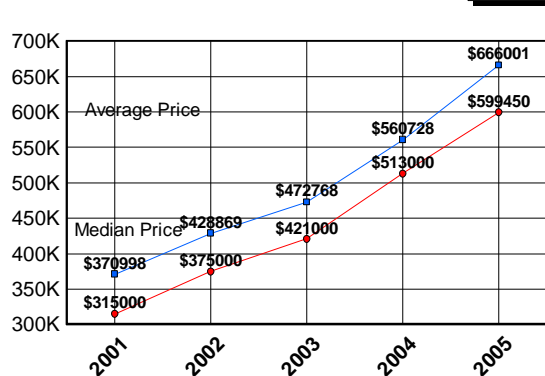
| Price Range | New This Month | | | Year-To-Date | | |
|---------------------|----------------|------------|--------------|--------------|--------------|-------------|
| | 2005 | 2004 | % Change | 2005 | 2004 | % Change |
| 0-149999 | 0 | 0 | 0.0 | 1 | 2 | -50.0 |
| 150000-299999 | 2 | 9 | -77.8 | 36 | 115 | -68.7 |
| 300000-449999 | 25 | 27 | -7.4 | 212 | 441 | -51.9 |
| 450000-599999 | 32 | 47 | -31.9 | 477 | 553 | -13.7 |
| 600000-749999 | 24 | 29 | -17.2 | 368 | 260 | 41.5 |
| 750000-999999 | 15 | 15 | 0.0 | 223 | 132 | 68.9 |
| 1000000 & Over | 12 | 11 | 9.1 | 125 | 67 | 86.6 |
| Grand Total: | 110 | 138 | -20.3 | 1,442 | 1,570 | -8.2 |

DATA SOURCE

Metropolitan Regional Information System (MRIS)

NOTES: Properties not listed through this Multiple Listing Service are not reflected. The term "sales" represents ratified purchase contracts. Current year information is preliminary and subject to revision. Current year-to-date contract information may not equal the sum of the monthly contract totals reported in previous issues. Prices are not adjusted for inflation.

AVERAGE & MEDIAN PRICE



MARKET BY PRICE RANGE

