

# ARLINGTON COUNTY HOUSING REPORT

## Residential Market Report

### Condo/Co-ops

December

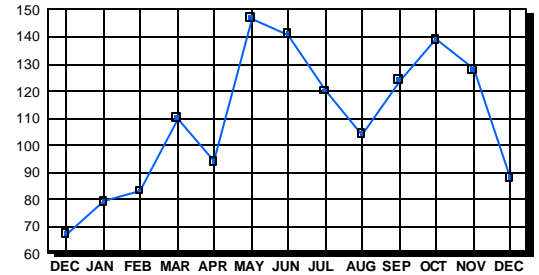
2004

#### LISTINGS

Condo/Co-ops Price Range	New This Month			Total Active		
	2004	2003	% Change	2004	2003	% Change
0-49999	0	0	0.0	4	0	400.0
50000-99999	0	6	-600.0	2	2	0.0
100000-149999	8	17	-52.9	14	19	-26.3
150000-199999	4	16	-75.0	4	6	-33.3
200000-299999	39	35	11.4	20	10	100.0
300000-399999	30	34	-11.8	17	12	41.7
400000-499999	19	9	111.1	4	10	-60.0
500000 & Over	12	5	140.0	23	8	187.5
<b>Grand Total:</b>	<b>112</b>	<b>122</b>	<b>-8.2</b>	<b>88</b>	<b>67</b>	<b>31.3</b>

#### INVENTORY TREND

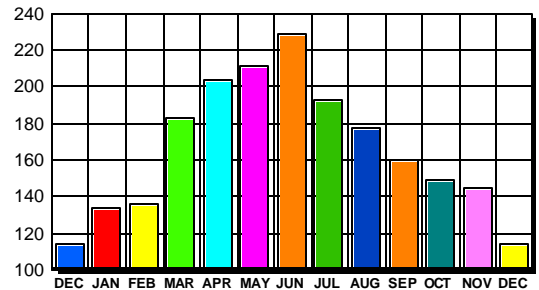
Listings Active At End Of Month



#### CONTRACTS

Condo/Co-ops Price Range	New This Month			Year-To-Date		
	2004	2003	% Change	2004	2003	% Change
0-49999	0	0	0.0	1	0	100.0
50000-99999	0	8	-800.0	13	131	-90.1
100000-149999	3	13	-76.9	134	200	-33.0
150000-199999	7	26	-73.1	206	362	-43.1
200000-299999	39	40	-2.5	611	633	-3.5
300000-399999	34	30	13.3	637	392	62.5
400000-499999	23	6	283.3	265	99	167.7
500000 & Over	8	3	166.7	168	58	189.7
<b>Grand Total:</b>	<b>114</b>	<b>126</b>	<b>-9.5</b>	<b>2,035</b>	<b>1,875</b>	<b>8.5</b>

#### SALES TREND



#### SETTLEMENTS

Condo/Co-ops Price Range	New This Month			Year-To-Date		
	2004	2003	% Change	2004	2003	% Change
0-49999	0	0	0.0	1	2	-50.0
50000-99999	0	9	-900.0	16	131	-87.8
100000-149999	9	11	-18.2	132	195	-32.3
150000-199999	9	24	-62.5	201	310	-35.2
200000-299999	59	53	11.3	582	647	-10.0
300000-399999	41	33	24.2	623	411	51.6
400000-499999	24	22	9.1	302	110	174.5
500000 & Over	14	7	100.0	174	72	141.7
<b>Grand Total:</b>	<b>156</b>	<b>159</b>	<b>-1.9</b>	<b>2,031</b>	<b>1,878</b>	<b>8.1</b>

#### DATA SOURCE

Metropolitan Regional Information System (MRIS)

NOTES: Properties not listed through this Multiple Listing Service are not reflected. The term "sales" represents ratified purchase contracts. Current year information is preliminary and subject to revision. Current year-to-date contract information may not equal the sum of the monthly contract totals reported in previous issues. Prices are not adjusted for inflation.

