

# FAUQUIER COUNTY HOUSING REPORT

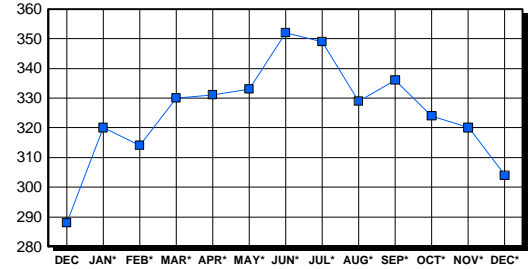
## Residential Market Report Single Family Homes December 2003

### LISTINGS

Price Range	New This Month			Total Active		
	2003	2002	% Change	2003	2002	% Change
0-149999	1	7	-85.7	7	10	-30.0
150000-299999	35	36	-2.8	81	96	-15.6
300000-449999	34	22	54.5	82	92	-10.9
450000-599999	11	3	266.7	61	32	90.6
600000-749999	3	5	-40.0	19	12	58.3
750000-999999	6	1	500.0	19	13	46.2
1000000 & Over	2	2	0.0	35	33	6.1
<b>Grand Total:</b>	<b>92</b>	<b>76</b>	<b>21.1</b>	<b>304</b>	<b>288</b>	<b>5.6</b>

### INVENTORY TREND

Listings Active At End Of Month

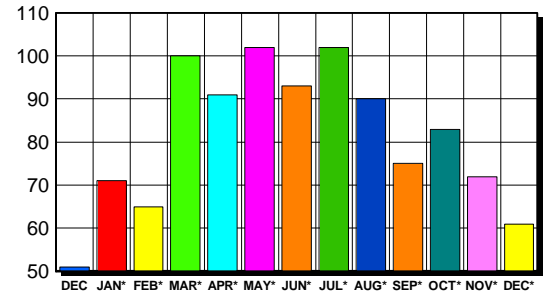


### CONTRACTS

Price Range	New This Month			Year-To-Date		
	2003	2002	% Change	2003	2002	% Change
0-149999	4	5	-20.0	54	92	-41.3
150000-299999	33	24	37.5	494	495	-0.2
300000-449999	16	10	60.0	315	221	42.5
450000-599999	4	6	-33.3	81	69	17.4
600000-749999	1	5	-80.0	22	25	-12.0
750000-999999	1	0	100.0	13	18	-27.8
1000000 & Over	2	2	0.0	26	13	100.0
<b>Grand Total:</b>	<b>61</b>	<b>52</b>	<b>17.3</b>	<b>1,005</b>	<b>933</b>	<b>7.7</b>

### SALES TREND

Contracts Ratified Per Month



### SETTLEMENTS

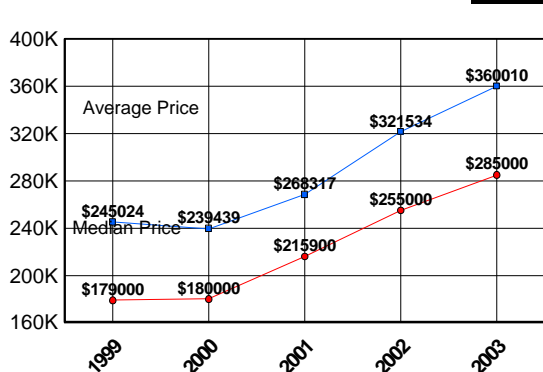
Price Range	New This Month			Year-To-Date		
	2003	2002	% Change	2003	2002	% Change
0-149999	3	7	-57.1	53	95	-44.2
150000-299999	41	24	70.8	489	509	-3.9
300000-449999	28	19	47.4	325	215	51.2
450000-599999	9	5	80.0	79	55	43.6
600000-749999	4	2	100.0	22	23	-4.3
750000-999999	0	5	-500.0	8	20	-60.0
1000000 & Over	7	1	600.0	28	16	75.0
<b>Grand Total:</b>	<b>92</b>	<b>63</b>	<b>46.0</b>	<b>1,004</b>	<b>933</b>	<b>7.6</b>

### DATA SOURCE

Metropolitan Regional Information System (MRIS)

NOTES: Properties not listed through this Multiple Listing Service are not reflected. The term "sales" represents ratified purchase contracts. Current year information is preliminary and subject to revision. Current year-to-date contract information may not equal the sum of the monthly contract totals reported in previous issues. Prices are not adjusted for inflation.

### AVERAGE & MEDIAN PRICE



### MARKET BY PRICE RANGE

