

# ALEXANDRIA CITY HOUSING REPORT

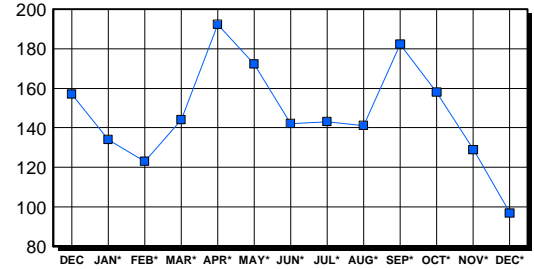
## Residential Market Report Single Family Homes December 2003

### LISTINGS

Price Range	New This Month			Total Active		
	2003	2002	% Change	2003	2002	% Change
0-149999	1	0	0.0	6	6	100.0
150000-299999	10	25	-60.0	17	43	-60.5
300000-449999	16	30	-46.7	18	49	-63.3
450000-599999	18	8	125.0	21	19	10.5
600000-749999	9	5	80.0	12	14	-14.3
750000-999999	1	4	-75.0	6	15	-60.0
1000000 & Over	0	2	-200.0	17	11	54.5
<b>Grand Total:</b>	<b>55</b>	<b>74</b>	<b>-25.7</b>	<b>97</b>	<b>157</b>	<b>-38.2</b>

### INVENTORY TREND

Listings Active At End Of Month

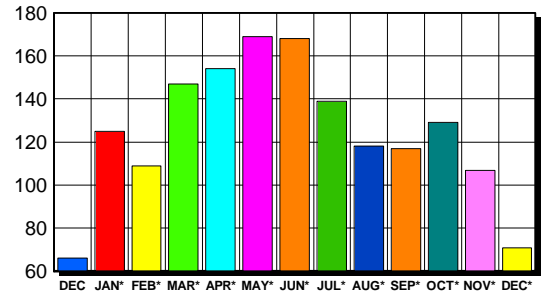


### CONTRACTS

Price Range	New This Month			Year-To-Date		
	2003	2002	% Change	2003	2002	% Change
0-149999	0	0	0.0	5	21	-76.2
150000-299999	12	14	-14.3	261	378	-31.0
300000-449999	18	36	-50.0	633	562	12.6
450000-599999	24	9	166.7	377	250	50.8
600000-749999	11	5	120.0	154	97	58.8
750000-999999	4	4	0.0	79	78	1.3
1000000 & Over	2	3	-33.3	44	44	0.0
<b>Grand Total:</b>	<b>71</b>	<b>71</b>	<b>0.0</b>	<b>1,553</b>	<b>1,430</b>	<b>8.6</b>

### SALES TREND

Contracts Ratified Per Month



### SETTLEMENTS

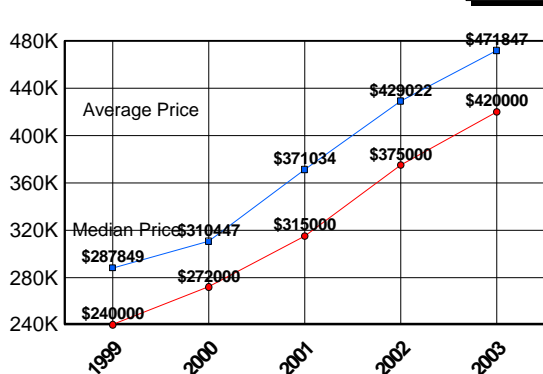
Price Range	New This Month			Year-To-Date		
	2003	2002	% Change	2003	2002	% Change
0-149999	0	0	0.0	5	28	-82.1
150000-299999	17	19	-10.5	248	383	-35.2
300000-449999	33	51	-35.3	666	565	17.9
450000-599999	41	22	86.4	367	240	52.9
600000-749999	14	11	27.3	147	100	47.0
750000-999999	6	12	-50.0	82	71	15.5
1000000 & Over	1	4	-75.0	46	39	17.9
<b>Grand Total:</b>	<b>112</b>	<b>119</b>	<b>-5.9</b>	<b>1,561</b>	<b>1,426</b>	<b>9.5</b>

### DATA SOURCE

Metropolitan Regional Information System (MRIS)

NOTES: Properties not listed through this Multiple Listing Service are not reflected. The term "sales" represents ratified purchase contracts. Current year information is preliminary and subject to revision. Current year-to-date contract information may not equal the sum of the monthly contract totals reported in previous issues. Prices are not adjusted for inflation.

### AVERAGE & MEDIAN PRICE



### MARKET BY PRICE RANGE

