

# PRINCE WILLIAM COUNTY HOUSING REPORT

## Residential Market Report

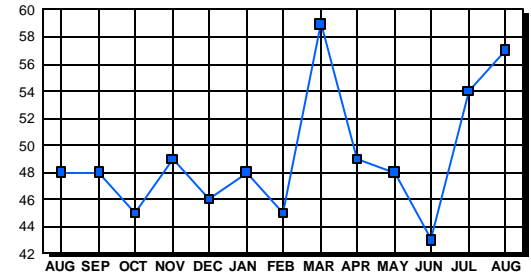
### Condo/Co-ops August 2003

#### LISTINGS

| Price Range         | New This Month |           |            | Total Active |           |             |
|---------------------|----------------|-----------|------------|--------------|-----------|-------------|
|                     | 2003           | 2002      | % Change   | 2003         | 2002      | % Change    |
| 0-49999             | 0              | 0         | 0.0        | 1            | 1         | 0.0         |
| 50000-99999         | 8              | 18        | -55.6      | 19           | 20        | -5.0        |
| 100000-149999       | 26             | 45        | -42.2      | 9            | 14        | -35.7       |
| 150000-199999       | 35             | 8         | 337.5      | 11           | 6         | 83.3        |
| 200000-299999       | 7              | 3         | 133.3      | 17           | 7         | 142.9       |
| 300000-399999       | 0              | 0         | 0.0        | 0            | 0         | 0.0         |
| 400000-499999       | 0              | 0         | 0.0        | 0            | 0         | 0.0         |
| 500000 & Over       | 0              | 0         | 0.0        | 0            | 0         | 0.0         |
| <b>Grand Total:</b> | <b>76</b>      | <b>74</b> | <b>2.7</b> | <b>57</b>    | <b>48</b> | <b>18.8</b> |

#### INVENTORY TREND

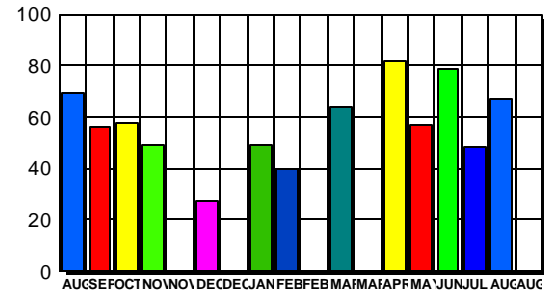
Listings Active At End Of Month



#### CONTRACTS

| Price Range         | New This Month |           |             | Year-To-Date |            |             |
|---------------------|----------------|-----------|-------------|--------------|------------|-------------|
|                     | 2003           | 2002      | % Change    | 2003         | 2002       | % Change    |
| 0-49999             | 0              | 0         | 0.0         | 0            | 2          | 0.0         |
| 50000-99999         | 5              | 17        | -70.6       | 51           | 134        | -61.9       |
| 100000-149999       | 27             | 48        | -43.8       | 238          | 310        | -23.2       |
| 150000-199999       | 31             | 6         | 416.7       | 169          | 39         | 333.3       |
| 200000-299999       | 4              | 0         | 400.0       | 28           | 8          | 250.0       |
| 300000-399999       | 0              | 0         | 0.0         | 0            | 0          | 0.0         |
| 400000-499999       | 0              | 0         | 0.0         | 0            | 0          | 0.0         |
| 500000 & Over       | 0              | 0         | 0.0         | 0            | 0          | 0.0         |
| <b>Grand Total:</b> | <b>67</b>      | <b>71</b> | <b>-5.6</b> | <b>486</b>   | <b>493</b> | <b>-1.4</b> |

#### SALES TREND



#### DATA SOURCE

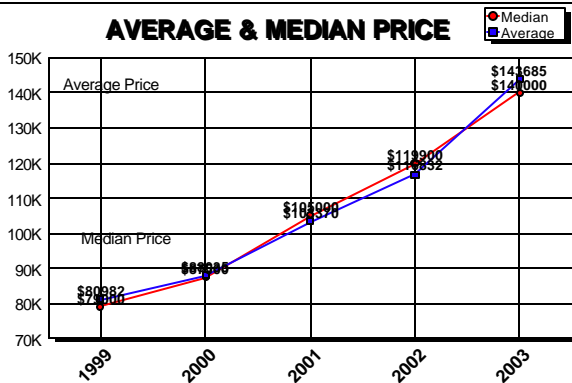
Metropolitan Regional Information System  
(MRIS)

NOTES: Properties not listed through this Multiple Listing Service are not reflected. The term "sales" represents ratified purchase contracts. Current year information is preliminary and subject to revision. Current year- to- date contract information may not equal the sum of the monthly contract totals reported in previous issues. Prices are not adjusted for inflation.

#### SETTLEMENTS

| Price Range         | New This Month |           |              | Year-To-Date |            |             |
|---------------------|----------------|-----------|--------------|--------------|------------|-------------|
|                     | 2003           | 2002      | % Change     | 2003         | 2002       | % Change    |
| 0-49999             | 0              | 0         | 0.0          | 0            | 3          | 0.0         |
| 50000-99999         | 2              | 12        | -83.3        | 50           | 121        | -58.7       |
| 100000-149999       | 25             | 31        | -19.4        | 219          | 286        | -23.4       |
| 150000-199999       | 15             | 5         | 200.0        | 147          | 33         | 345.5       |
| 200000-299999       | 1              | 0         | 100.0        | 27           | 7          | 285.7       |
| 300000-399999       | 0              | 0         | 0.0          | 0            | 0          | 0.0         |
| 400000-499999       | 0              | 0         | 0.0          | 0            | 0          | 0.0         |
| 500000 & Over       | 0              | 0         | 0.0          | 0            | 0          | 0.0         |
| <b>Grand Total:</b> | <b>43</b>      | <b>48</b> | <b>-10.4</b> | <b>443</b>   | <b>450</b> | <b>-1.6</b> |

#### AVERAGE & MEDIAN PRICE



#### MARKET BY PRICE RANGE

