

# FAIRFAX CITY HOUSING REPORT

## Residential Market Report

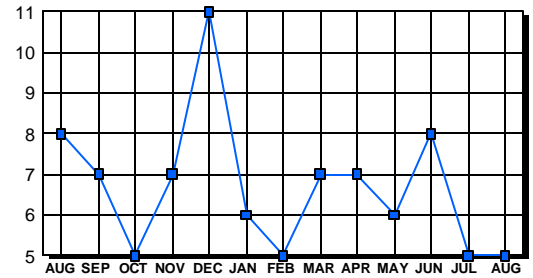
### Condo/Co-ops August 2003

#### LISTINGS

Price Range	New This Month			Total Active		
	2003	2002	% Change	2003	2002	% Change
0-49999	0	0	0.0	0	0	0.0
50000-99999	0	5	-500.0	3	4	-25.0
100000-149999	3	8	-62.5	2	4	-50.0
150000-199999	2	0	200.0	0	0	0.0
200000-299999	0	1	-100.0	0	0	0.0
300000-399999	0	0	0.0	0	0	0.0
400000-499999	0	0	0.0	0	0	0.0
500000 & Over	0	0	0.0	0	0	0.0
<b>Grand Total:</b>	<b>5</b>	<b>14</b>	<b>-64.3</b>	<b>5</b>	<b>8</b>	<b>-37.5</b>

#### INVENTORY TREND

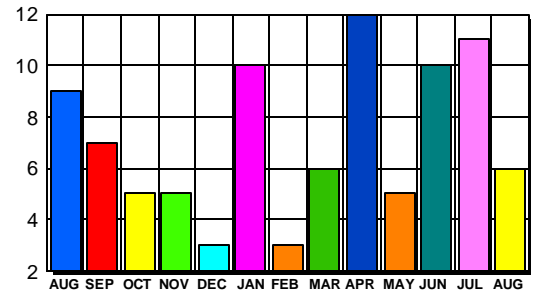
Listings Active At End Of Month



#### CONTRACTS

Price Range	New This Month			Year-To-Date		
	2003	2002	% Change	2003	2002	% Change
0-49999	0	0	0.0	0	0	0.0
50000-99999	0	3	-300.0	8	19	-57.9
100000-149999	3	7	-57.1	37	37	0.0
150000-199999	3	0	300.0	12	3	300.0
200000-299999	0	0	0.0	4	4	0.0
300000-399999	0	0	0.0	2	0	200.0
400000-499999	0	0	0.0	0	0	0.0
500000 & Over	0	0	0.0	0	0	0.0
<b>Grand Total:</b>	<b>6</b>	<b>10</b>	<b>-40.0</b>	<b>63</b>	<b>63</b>	<b>0.0</b>

#### SALES TREND



#### DATA SOURCE

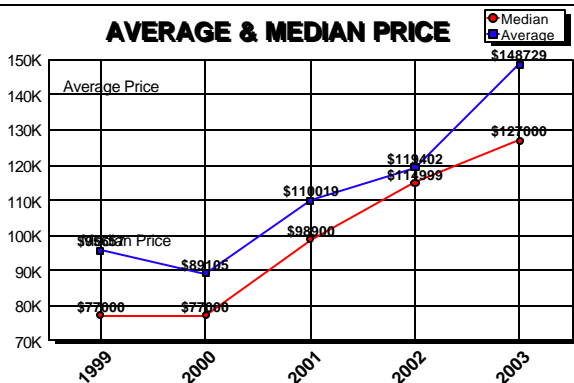
Metropolitan Regional Information System (MRIS)

NOTES: Properties not listed through this Multiple Listing Service are not reflected. The term "sales" represents ratified purchase contracts. Current year information is preliminary and subject to revision. Current year- to- date contract information may not equal the sum of the monthly contract totals reported in previous issues. Prices are not adjusted for inflation.

#### SETTLEMENTS

Price Range	New This Month			Year-To-Date		
	2003	2002	% Change	2003	2002	% Change
0-49999	0	0	0.0	0	0	0.0
50000-99999	0	3	-300.0	8	19	-57.9
100000-149999	6	4	50.0	35	27	29.6
150000-199999	2	1	100.0	9	3	200.0
200000-299999	0	1	-100.0	6	3	100.0
300000-399999	0	0	0.0	2	0	200.0
400000-499999	0	0	0.0	1	0	100.0
500000 & Over	0	0	0.0	0	0	0.0
<b>Grand Total:</b>	<b>8</b>	<b>9</b>	<b>-11.1</b>	<b>61</b>	<b>52</b>	<b>17.3</b>

#### AVERAGE & MEDIAN PRICE



#### MARKET BY PRICE RANGE

