

PRINCE WILLIAM COUNTY HOUSING REPORT

Residential Market Report

Condo/Co-ops

April

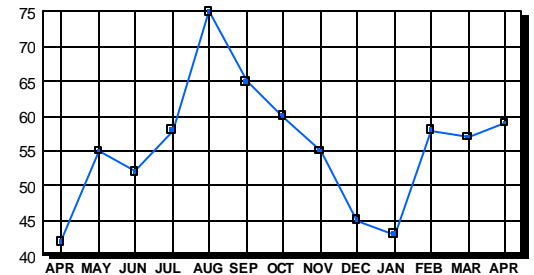
2005

LISTINGS

Price Range	New This Month			Total Active		
	2005	2004	% Change	2005	2004	% Change
0-49999	2	1	100.0	3	2	50.0
50000-99999	0	1	-100.0	16	16	0.0
100000-149999	3	15	-80.0	5	8	-37.5
150000-199999	7	42	-83.3	2	4	-50.0
200000-299999	57	23	147.8	11	7	57.1
300000-399999	18	7	157.1	13	5	160.0
400000-499999	6	1	500.0	3	0	300.0
500000 & Over	4	0	400.0	6	0	600.0
Grand Total:	97	90	7.8	59	42	40.5

INVENTORY TREND

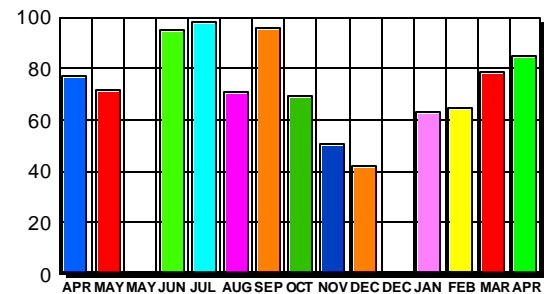
Listings Active At End Of Month



CONTRACTS

Price Range	New This Month			Year-To-Date		
	2005	2004	% Change	2005	2004	% Change
0-49999	0	1	-100.0	0	1	0.0
50000-99999	0	1	-100.0	2	14	-85.7
100000-149999	3	16	-81.3	15	64	-76.6
150000-199999	10	40	-75.0	41	126	-67.5
200000-299999	52	17	205.9	191	51	274.5
300000-399999	11	3	266.7	29	6	383.3
400000-499999	6	1	500.0	10	1	900.0
500000 & Over	3	0	300.0	4	0	400.0
Grand Total:	85	79	7.6	292	263	11.0

SALES TREND



SETTLEMENTS

Price Range	New This Month			Year-To-Date		
	2005	2004	% Change	2005	2004	% Change
0-49999	0	1	-100.0	0	1	0.0
50000-99999	0	0	0.0	1	14	-92.9
100000-149999	3	12	-75.0	11	59	-81.4
150000-199999	6	31	-80.6	39	100	-61.0
200000-299999	41	15	173.3	161	41	292.7
300000-399999	9	2	350.0	20	3	566.7
400000-499999	3	0	300.0	5	0	500.0
500000 & Over	0	0	0.0	0	0	0.0
Grand Total:	62	61	1.6	237	218	8.7

DATA SOURCE

Metropolitan Regional Information System (MRIS)

NOTES: Properties not listed through this Multiple Listing Service are not reflected. The term "sales" represents ratified purchase contracts. Current year information is preliminary and subject to revision. Current year-to-date contract information may not equal the sum of the monthly contract totals reported in previous issues. Prices are not adjusted for inflation.

